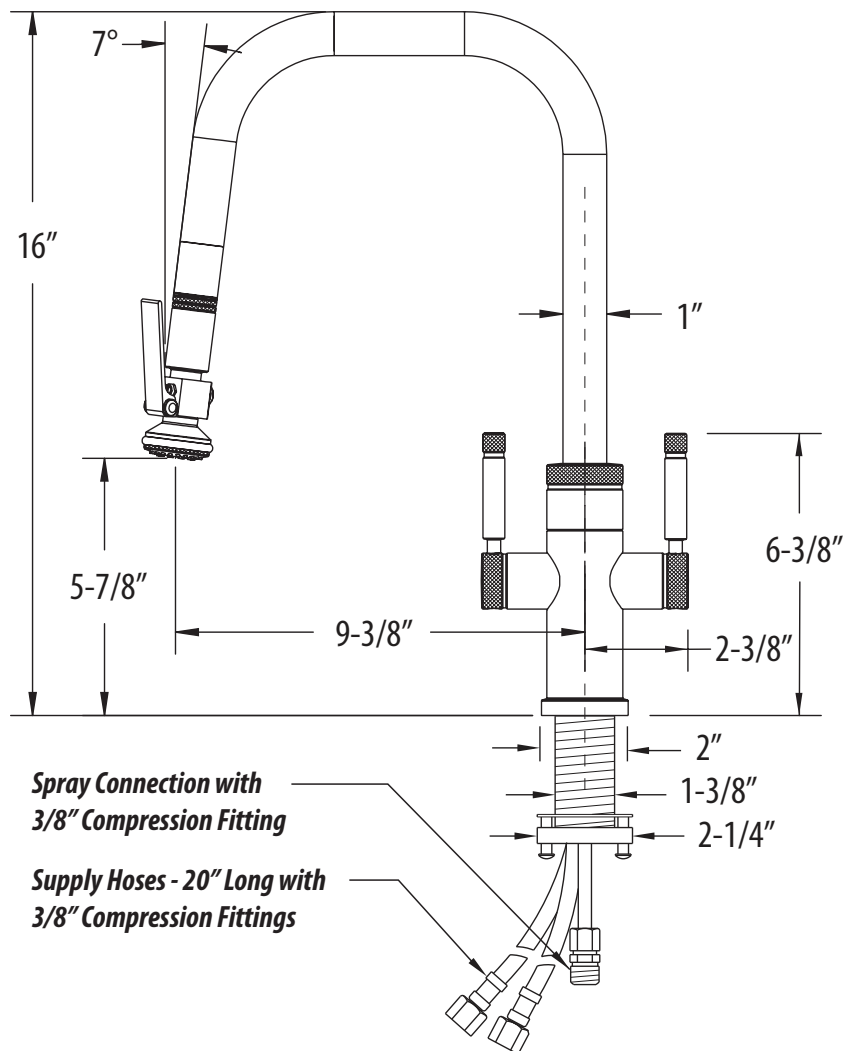
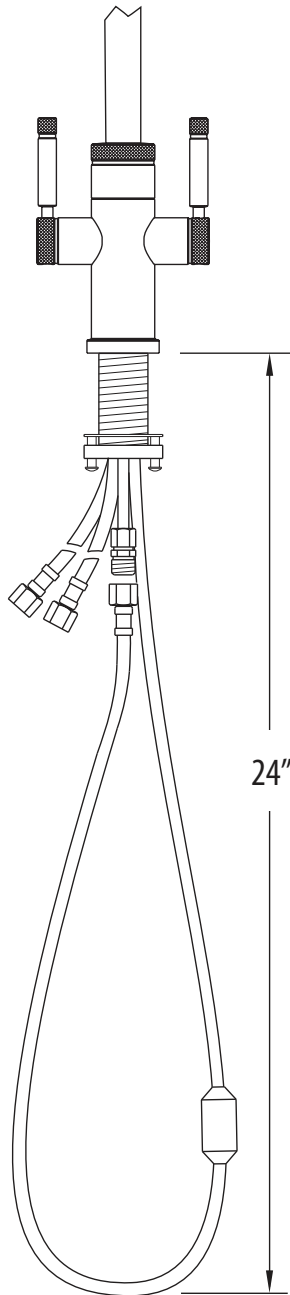




# FULTON INDST. 2 HANDLE PLP PULLDOWN FAUCET LEVER SPRAYER ANGLED SPOUT MODEL # 10272

- Max Counter Thickness 2-3/8"
- Minimum Install Hole Size 1-1/2"



DIMENSIONS MAY VARY AND ARE SUBJECT TO CHANGE. NO RESPONSIBILITY IS ASSUMED FOR USE OF SUPERCEDED OR VOIDED DATA

44180 Raintree Court | Murrieta, CA 92562  
1-888-304-0520 | waterstoneeco.com



**ECO BRASS®**  
HIGH PERFORMANCE LEAD FREE BRASS

11/14/2025