

TWO HANDLE PLP PULLDOWN FAUCET INSTALLATION INSTRUCTIONS

All Modern and Industrial Two Handle PLP Pulldown Faucets



Model #s:

9302, 9402, 9412,
9702, 9812, 9902,
9912, 9932, 9942,
10202, 10212,
10222, 10232,
10242, 10252,
10262, 10272,
10282, 10292,
9352, 9452, 9462,
9750, 9852, 9862,
9952, 9962, 9982,
9992, 10302,
10312, 10322,
10332, 10342,
10352, 10362,
10372, 10382,
10392



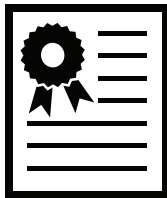
BEFORE YOU BEGIN YOUR INSTALLATION:

1



Turn off water supply.

2



Observe all local plumbing codes.

3



Inspect waste and water supplies for signs of damage. Replace as necessary.

4



DO NOT use petroleum based products on this faucet.

REQUIRED TOOLS:



1. Adjustable Wrench



2. Phillips Screwdriver

PARTS INCLUDED:

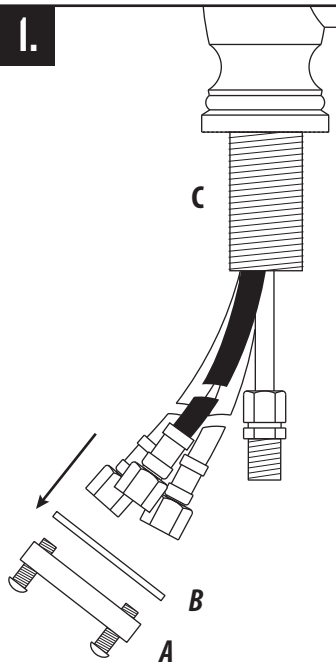
**XX represents finish*

HK-THC-XX*
HANDLE BUTTON KIT (TRADITIONAL ONLY)

HK-USM1375
UNDER SINK MOUNTING HARDWARE KIT (1-3/8")

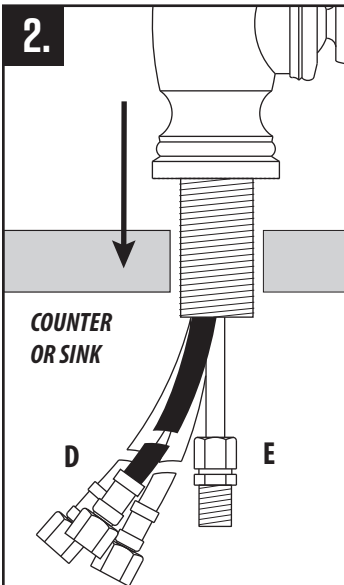
PULLDOWN FAUCET INSTALLATION

1.



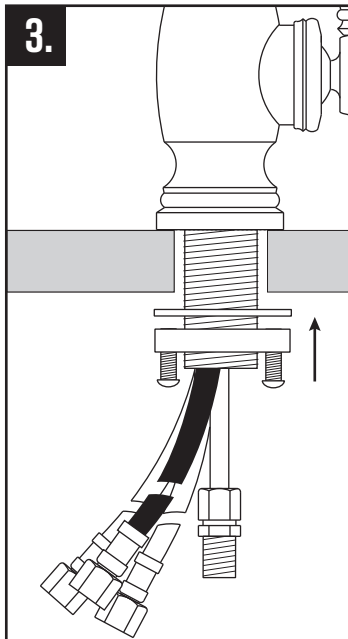
Remove the clamp nut (A) and washer (B) from the threaded shroud (C).

2.



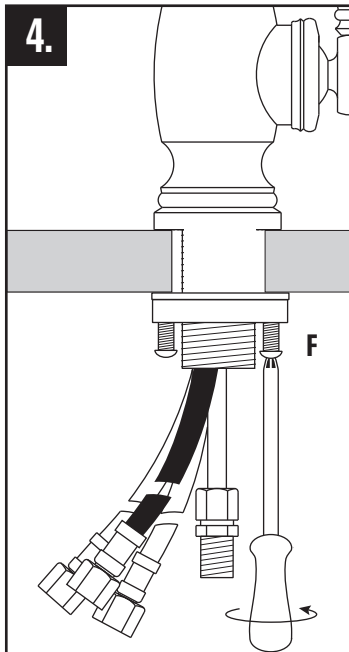
Fit flexible hoses (D) and spray connection tube (E) through hole on counter or sink. (No plumbers putty is required. O-ring seals base).

3.



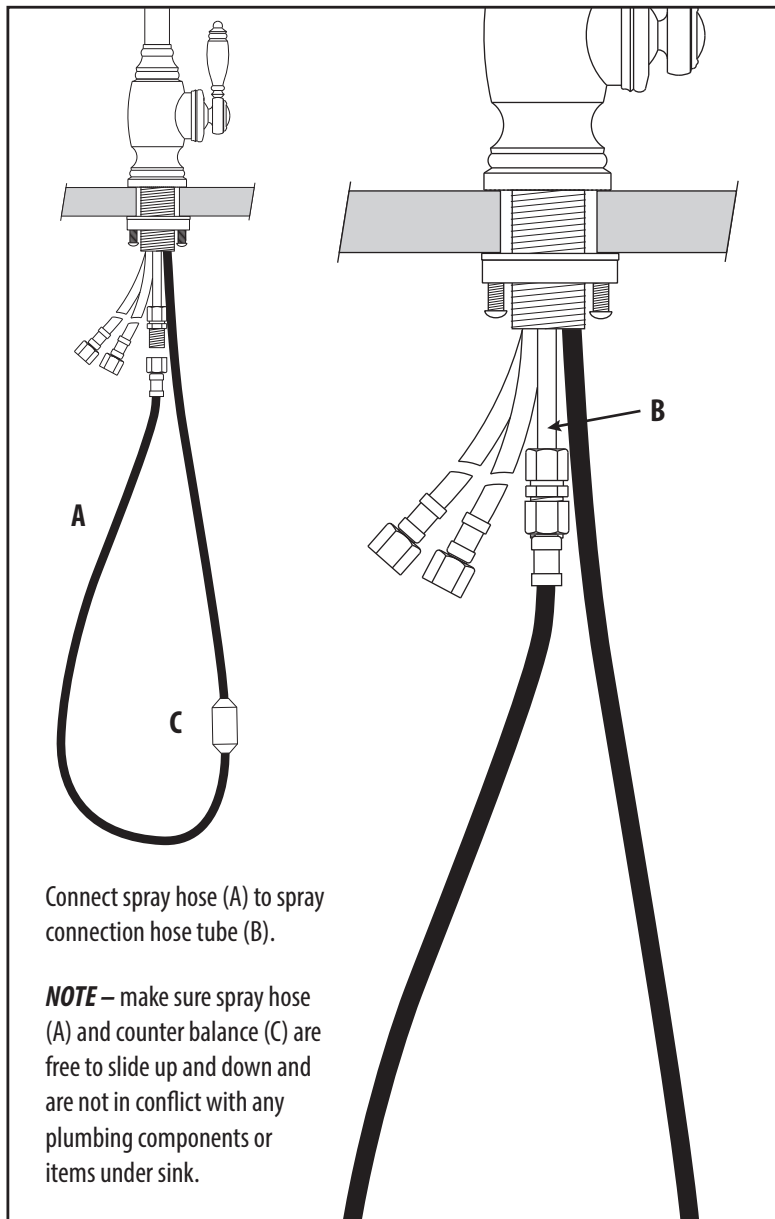
Slide washer and thread the clamp nut onto threaded shroud. Tighten nut snug to underside of sink or counter.

4.



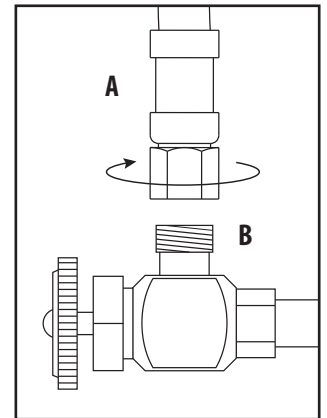
Turn faucet to the desired handle position. Securely tighten clamp screws (F).

CONNECT THE PULLDOWN SPRAY HOSE



CONNECTING SUPPLY HOSES

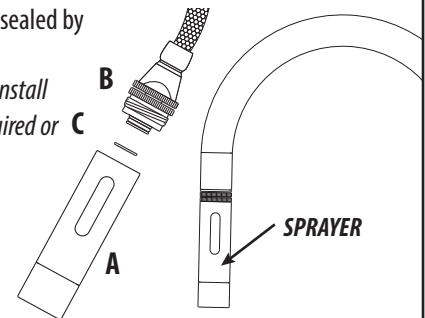
Before connecting supply hoses, flush supply stops to clear any debris. Place a bucket underneath stops and run water for 5 to 10 seconds. Turn water off. Carefully position hot and cold supplies so they will not interfere with other hoses. Connect supply hoses (A) to supply stops (B). **DO NOT** use teflon tape or plumbers putty. Turn water back on and check for leaks.



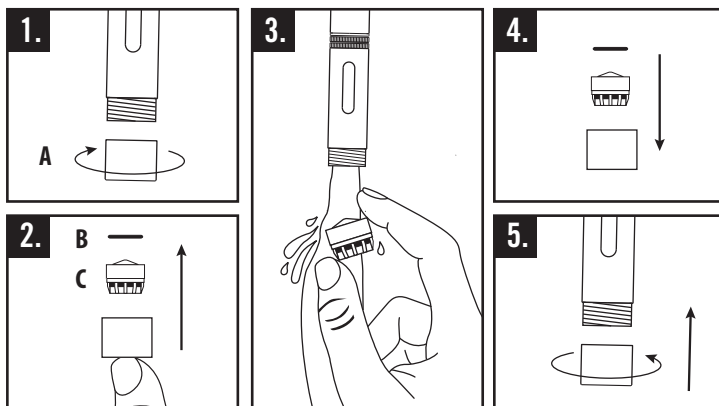
DEBRIS SCREEN FEATURE

1. Turn off water supplies underneath sink and remove any water pressure by opening the faucet handle.
2. Unscrew sprayer (A) from spray hose by holding knurled swivel (B).
3. Inspect, remove and clean debris screen (C) in sprayer. Once cleaned, replace debris screen and reattach to swivel.
4. Close faucet handle and turn on water supplies. Make sure sprayer is secure and sealed by running faucet.

Recommended upon install and continued as required or annually.



CLEANING AERATOR



1. Gently unscrew and remove spout tip (A) by hand.
 2. Remove O-ring (B). To remove aerator (C), push with finger from bottom.
 3. Thoroughly rinse aerator with water until all debris is removed.
 4. Place aerator, then O-ring back into spout tip.
 5. Gently screw spout tip, by hand, snugly back onto spout.
- Recommended upon install and continued as required or annually.*

